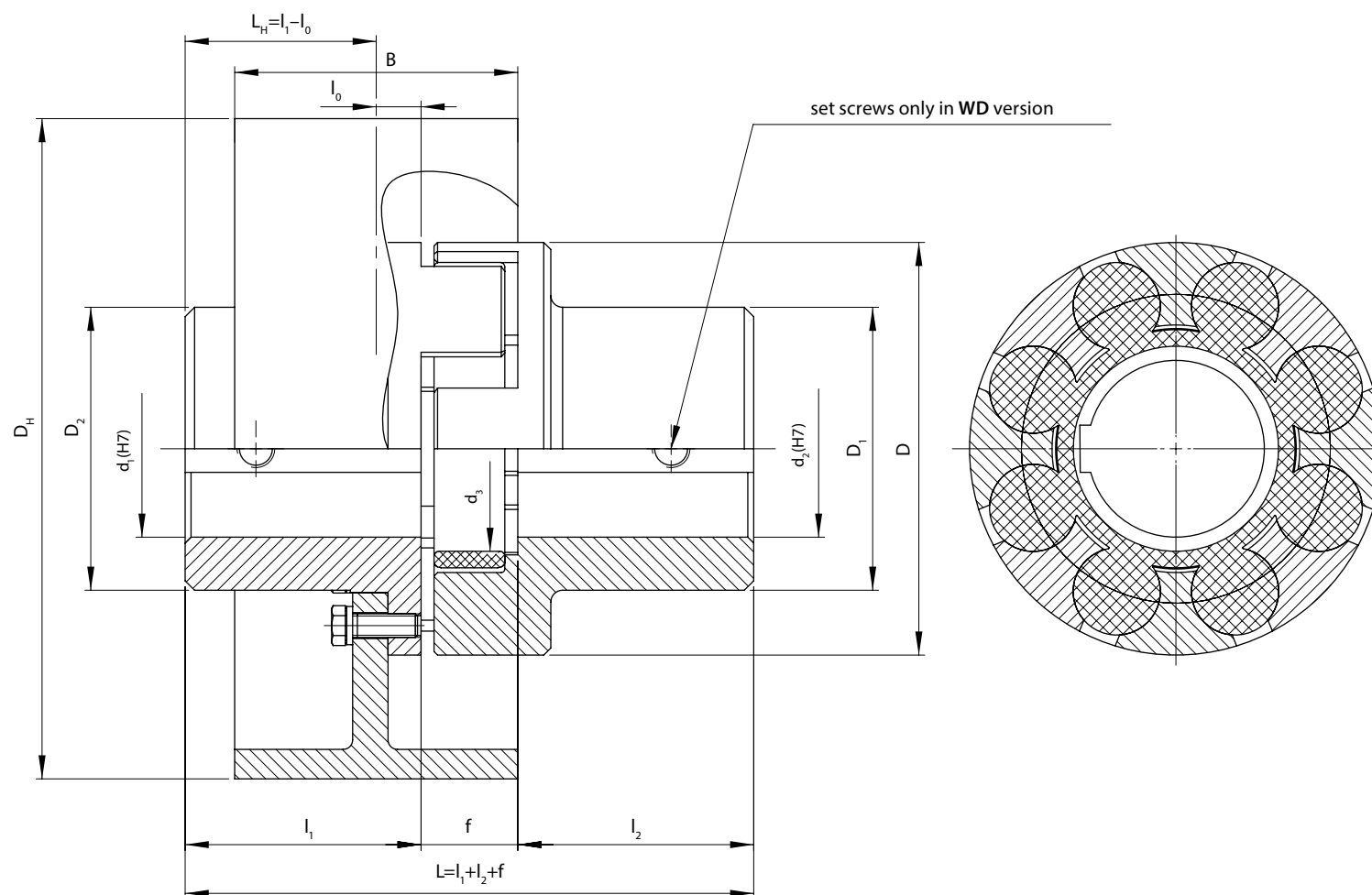


Example of designation of the ASN-SBH coupling with the nominal torque of $M_n=300$ Nm, brake drum diameter of $D_H=200$ mm, distance of the brake drum symmetry axis from the hub origin of $L_H=55$ mm, hub holes diameters of $d_1=40$ mm, $d_2=50$ mm, hub holes lengths of $l_1=56$ mm, $l_2=80$ mm, size of 005 (marking see page A2-1):

300-200-55-40/56-50/80-005 ASN-SBH Brake coupling

- the "Ex" version – 300-200-55-40/56-50/80-005 ASN-SBH-**Ex** Brake coupling
- the "WD" version – 300-200-55-40/56-50/80-005 ASN-SBH-**WD** Brake coupling
- with pilot bores – 300-200-55-**ow**/56-**ow**/80-005 ASN-SBH Brake coupling



Nominal torque M_n	d_1, d_2		l_1, l_2 ¹⁾		f	D	D ₁	D ₂	D _H ³⁾	B ³⁾	l ₀ ⁴⁾	d ₃	Max rotational speed ⁵⁾	Moment of inertia ²⁾	Weight ²⁾	Coupling size and type
	pilot	max	nomin.	extend.									n _{max}	I	m	
Nm	mm												1/min	kgm ²	kg	-
70	8	32	40	60	23	75	50	45	120	50	0	26	4000	0,0041	2,57	002 ASN-SBH
170	10	42	50	80	27	105	65	65	160	60	5	44	4000	0,0173	5,73	004 ASN-SBH
									200	80	0		3000	0,0497	9,12	
300	12	55	56	80	33	125	85	85	200	80	1	55	3000	0,0555	11,0	005 ASN-SBH
500	16	65	63	90	39	145	95	95	200	80	3	64	3000	0,0648	13,1	006 ASN-SBH
									250	100	3		2500	0,159	19,2	
800	20	80	75	110	41	175	120	120	250	100	5	87	2500	0,185	23,6	007 ASN-SBH
									320	120	0		2000	0,470	34,2	
1400	22	90	100	140	48	200	135	135	320	120	5	100	2000	0,516	41,4	008 ASN-SBH
									400	150	0		1800	1,333	61,1	
2100	26	100	110	140	50	230	150	150	400	150	5	115	1800	1,410	68,7	009 ASN-SBH
									500	190	5		1500	3,532	99,5	
3400	28	120	120	170	60	260	178	178	500	190	5	140	1500	3,708	112,4	010 ASN-SBH
5000	30	130	130	170	67	300	198	198	630	235	0	155	1200	10,81	197,6	011 ASN-SBH
									710	265	-10		1000	18,89	254,1	
8300	30	140	165	210	73	360	210	210	630	235	8	210	1200	11,56	227,8	012 ASN-SBH
									710	265	0		1000	19,63	284,3	
11400	30	150	175	210	73	400	223	220	710	265	5	252	1000	20,38	309,5	013 ASN-SBH
18000	30	180	240	280	84	480	290	290	800	290	15	290	1000	36,98	486,2	014 ASN-SBH

We also offer special designs according to the individual wishes of the customer.

We produce keyways as recommended, normally acc. to PN-70/M-85005, with the Js9 tolerance.

- ¹⁾ On request, we produce couplings with hub lengths different from the nominal and extended lengths provided in the table.
- ²⁾ The weight and the moment of inertia have been determined for the coupling with the maximum holes and nominal lengths of the hubs.
- ³⁾ On request, we produce couplings brake drums with dimensions different from those provided in the table.
- ⁴⁾ l₀ (L_H=l₁-l₀) dimension after the agreement can be changed according to the wishes of the customer.
- ⁵⁾ After the dynamic balance the maximum rotational speed can be increased (the dynamic balance must be agreed).
 - Couplings with brake drum Ø400 and bigger are normally balanced dynamically, other couplings are balanced statically.
 - After the agreement the couplings can be made with the holes for protective discs in hubs.