

Example of designation of the SPJ coupling with the nominal torque of $M_n=3150$ Nm, hub hole diameters of $d_1=50$ mm, $d_2=60$ mm, hub hole lengths of $l_1=80$ mm, $l_2=140$ mm, size of 003 (marking see page A6-1):

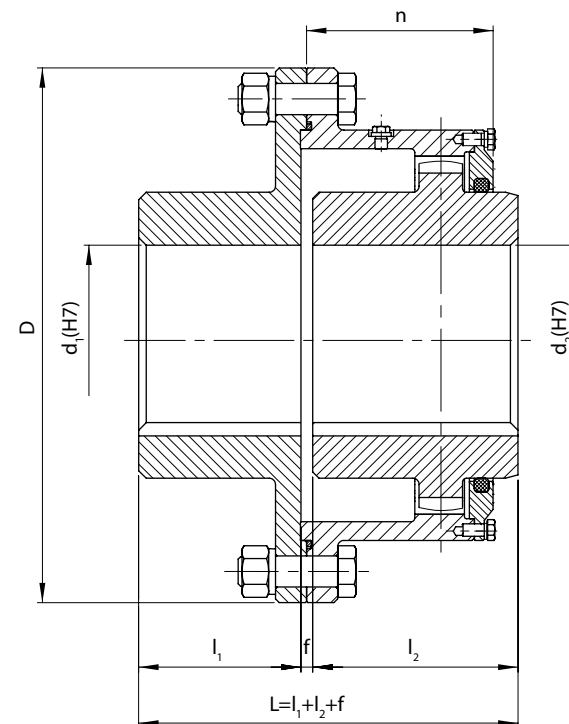
3150-50/80-60/140-003 SPJ Single-sided gear coupling

- with pilot bores – 3150-**ow**/80-**ow**/140-003 SPJ Single-sided gear coupling

Single-sided gear couplings are used in pairs with a spacer shaft. In cases where journal misalignment is excluded, a single SPJ coupling may be used.

Screw-tightened covers are used from sizes 005 to 009.

Sizes 004 and smaller are manufactured with non-removable covers.



We produce keyways as recommended, normally acc. to PN-70/M-85005, with the Js9 tolerance.

- 1) On request, we produce couplings with the lengths of hubs different from the nominal and extended lengths given in the table.
- 2) The weight and the moment of inertia have been determined for the coupling with the maximum holes and nominal lengths of the hubs.

Nominal torque M_n	d_1, d_2		l_1, l_2 ¹⁾		f	D	n	Max rotational speed	Moment of inertia ²⁾	Weight ²⁾	Coupling size and type	
	pilot	max	nomin.	extend.								
Nm	mm								n_{max}	l	m	-
									1/min	kgm ²	kg	
710	20	40	50	110	5	160	47	3000	0,03	7,2	001 SPJ	
1400	30	50	80	110	5	185	62		0,052	13,3	002 SPJ	
3150	45	65	80	140	5	220	77		0,105	23,6	003 SPJ	
5600	50	80	110	170	5	250	98		0,212	37,6	004 SPJ	
11 800	65	100	120	210	10	330	115	2500	0,70	76,0	005 SPJ	
19 000	80	125	140	210	10	360	130	1500	1,15	108,3	006 SPJ	
30 000	100	160	170	300	10	430	150		3,55	167,7	007 SPJ	
50 000	120	190	170	350	10	500	162,5	1600	7,10	250,1	008 SPJ	
71 000	140	220	200	350	10	550	182,5	1250	13,7	336,5	009 SPJ	