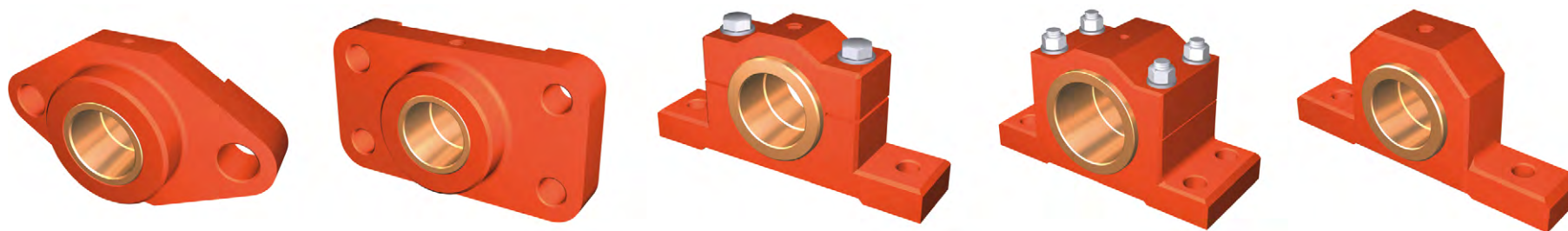


Slide bearings are normally (if it is indicated by the marking) delivered with bushes/split bearings made of bronze B101 of the dimensions being in compliance with PN- 80/ M-87101, PN-81/M-87102. After the agreement it is possible to manufacture the body with bushes/split bearings of other dimensions or of other material.

Bushes/split bearings are manufactured in three types:

- Simple – "A"
- With flange – "B"
- With two flanges – "C".

**MATERIAL:** cast iron, (steel), bush/split bearing – bronze.



**METHOD OF MARKING:**

[ name ] – [ D ] – [ marking of bush/split bearing ] – [ size ] [ type ]

<b>name</b>	e.g. Medium duty plummer block housing (2 bolt)
<b>D</b>	diameter of the hole in the housing [mm]
<b>Bushes/split bearings marking</b>	marking of the bushes/split bearings in compliance with PN-80/M- 87101, PN-81/M-87102; in the case of ordering a plummer block without split bearing, write <b>"BP"</b> , in the case of ordering a flange bearing or eye bearing without the bush, write <b>"BT"</b> marking
<b>size</b>	e.g. 102
<b>type</b>	e.g. AKD-2