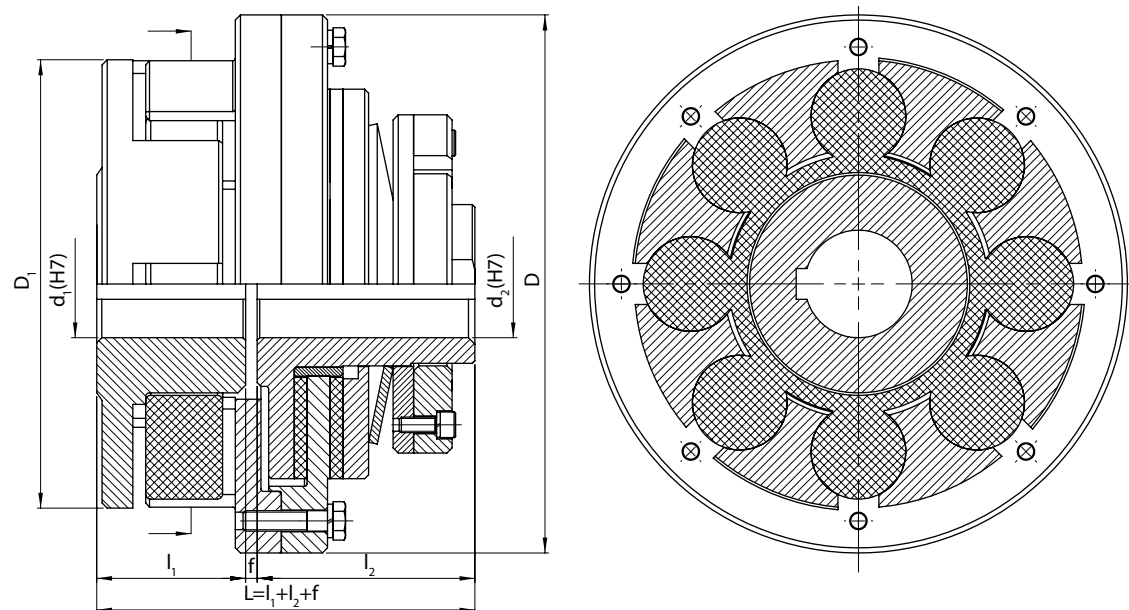


**Example of designation** of the APMX coupling with the slipping moment of  $M_k = 250 \text{ Nm}$ , hub hole diameters of  $d_1 = 35 \text{ mm}$ ,  $d_2 = 30 \text{ mm}$ , hub hole lengths of  $l_1 = 55 \text{ mm}$ ,  $l_2 = 60 \text{ mm}$ , size of 003 (marking see page A7-1):

**250-35/55-30/60-003 APMX Overload coupling**



A7-3

Slipping moment $M_k$	$d_1$	$d_2$	$l_1$	$l_2$	$f$	$D$	$D_1$	Max rotational speed $n_{max}$	Moment of inertia <sup>1)</sup> $I$	Weight <sup>1)</sup> $m$	Coupling size and type
	max	max	min	min							
Nm	mm							1/min	kgm <sup>2</sup>	kg	-
50÷90	24	25	40	40	2	120	85	3000	0,005	3,41	001 APMX
90÷200	28	32	50	55		150	105	2500	0,017	7,23	002 APMX
120÷300	35	32	50	55		170	125	2000	0,028	9,3	003 APMX
220÷500	40	40	55	80	5	190	145	1800	0,059	15,2	004 APMX
330÷800	60	45	70	90		240	175	1500	0,164	27,2	005 APMX
530÷1400	65	50	80	105		290	200	1200	0,39	45,7	006 APMX
920÷2100	75	65	90	120	7	320	230	1000	0,68	64,4	007 APMX

We produce keyways as recommended, normally acc. to PN-70/M-85005, with the Js9 tolerance.

<sup>1)</sup> The weight and the moment of inertia have been determined for the coupling with the maximum holes and nominal lengths of the hubs.